

Handheld Thermal Camera C200Pro



See Difference

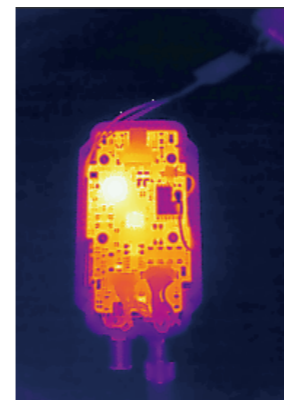


InfiRay C200 Pro is a handheld thermal camera with an upgraded thermographic detector. Operating efficiency is upgraded: InfiRay self-developed high-performance 12μm infrared detector, 256×192 high resolution, and 0.04°C temperature resolution are C200 Pro's "trump cards" to provide infrared thermal images of rich details and accurate temperature measurement. With pro-grade 2,000,000-pixel visible light and low lag, it can meet professional work requirements easily. What's more, it features timed photographing, 15h long battery life, plug-and-analyze through USB. Tianshu C200 Pro, powerful upgrade of the detector.

1 Powerful Upgraded Detector

- Pro-grade high-performance infrared detector

With pro-grade 256×192 resolution, thermal sensor, 2m Visual camera and pro-grade low lag, it can meet professional requirements easily. Matrix III intelligent image algorithm optimizes the short-distance imaging. With 56° wide FOV, it provides efficient short-distance details observation, to get clear thermal images with rich details.



- Pro-grade built-in thermal imaging functions

For professional users, Interval Snapshot and automatic alarm snapshot function were added; the number of photos to take and the time interval can be set, and meanwhile, the automatic alarm and snapshot can be set. To automatic record and trace of abnormal temperature, real-time record of equipment status separated from PC, target temperature trend, ultra-long battery life, external power supply, and quick deployment.

- Pro-grade easy-to-use thermal imager

Industry leading 15h battery life, increased by 36% compared with the last generation. IP54 waterproof and dustproof and 2m drop protection make it easier to use: even in a complicated environment, it can still provide crisp and clear thermal images.



- Pro-grade software support

For professional users, the analysis function has been greatly upgraded: support plug-and-analyze through USB on PC. It supports not only real-time screen projection and offline image analysis but also full-frame real-time point/line/area temperature analysis. One-click report generation, helping professional users output infrared inspection results and work efficiently.



2 Professional

- **0.04°C temperature resolution and $\pm 2^\circ\text{C}$ measurement accuracy**

With its ultra accuracy & NETD performance, C200 Pro can easily fit in your high-accuracy inspection tasks, such as material defect detection and precise component testing.

- **-20°C - +550°C wide measurement range**

Meet the demands to inspect different industrial temperature targets. C200 Pro can meet all the requirements such as building HVAC and vehicle maintenance.



- **4 modes +7 palettes**

4 popular modes with 7 palettes provide plenty combinations of on-device thermal image display, to support various complicated observation tasks of professionals.

- **Focus-free design and 56° wide FOV**

The focus-free lens, 56° wide FOV, and 256×192 high resolution ensure that the area you cannot approach can be inspected at a safe distance, and meanwhile to get crisp thermal images with rich details.



3 Solid · Reliable

- **Continue the famous design appearance**

Inherited from the last generation, the camera trigger has a perfect radius with a non-slip better touch. The boxing glove appearance and lower gravity center makes it so handy & comfortable to hold in your daily use.



- **IP54 +2m-drop protection**

It has IP54 waterproof and dustproof performance. With drop protection, even if it falls from 2m height, it still can provide clear thermal images.



- **Handheld or Fixed**

Besides handheld operation, it also has a 1/4 common threaded at the bottom, via which it can be fixed on a tripod for operation. With upgraded Real-time USB Radiometric transfer function & InfiRay's professional software, C200 Pro can perform even more complicated temperature Analysis & monitoring tasks.

Application Fields



Electrical maintenance Equipment inspection HVAC Vehicle maintenance Product R&D

Main Specifications

	C200 Pro	
Thermal Module	Detector Resolution	256×192
	Pixel Pitch	12μm
	NETD	<40mK
	Focal Length	3.2mm
	FOV	56°×42°
	IFOV	3.8mrad
	Focusing Mode	Focus-free
Temperature Measurement	Temperature Measurement	Center/highest/lowest/ 3 adjustable points
	Measurement Range	-20 °C ~ +550 °C
	Measurement Accuracy	$\pm 2\%$ or $\pm 2^\circ\text{C}$
	Measurement Unit	°C, °F, K
	Measurement Resolution	0.1°C
	Emissivity	0.01 - 1.0, adjustable
System Function	Lighting	LED fill-in light
	Image Mode	Thermal imaging, thermal fusion, visible light, PIP
	Palettes	White-hot, black-hot, molten metal, iron red, rainbow, high-contrast rainbow, black red
	Temperature Alarm	Full frame highest/lowest-temperature alarm
	Alarm Mode	Image alarm, LED alarm
	Automatic Alarm Snapshot	Support automatic alarm snapshot; Photo number and time interval can be set.
	Interval Snapshot	Support. Photo number and time interval can be set.
	Photo Storage	Automatic/Manual
	Image Data	Image and temperature data
	USB Video Transmission	Support, real-time analysis of temperature
	PC Analysis Software	Support
	Display Size	2.8LCD (320×240)
	Memory Card	16GB Micro SD card
	Battery Type	Rechargeable lithium-ion battery
	Power Supply	USB type-C
	Charging Time	About 4h @Power off
	Operating Time	15H
Power Management	Adjustable (automatic shutdown, 5 min, 10 min, 20 min)	
Others	Tripod Support	Yes, at the bottom of the handle
	Operating Temperature	-10°C~+50°C
	Staging Temperature	-20°C~+60°C
	Relative Humidity	10% - 95%, non-condensing
	IP Grade/Drop Protection	IP54 2m
	Dimension (L × W × H)	237×75×92 (mm)
	Weight	520g
	Accessory	USB cable, 16GB SD card, user guide